

JINNO PUMP HAS BEEN ENGINEERED TO THE STRINGENT INTERNATIONAL STANDARD JIS B8313 SINGLE STAGE END-SUCTION CENTRIFUGAL PUMP COUPLING TYPE MODEL : CF2

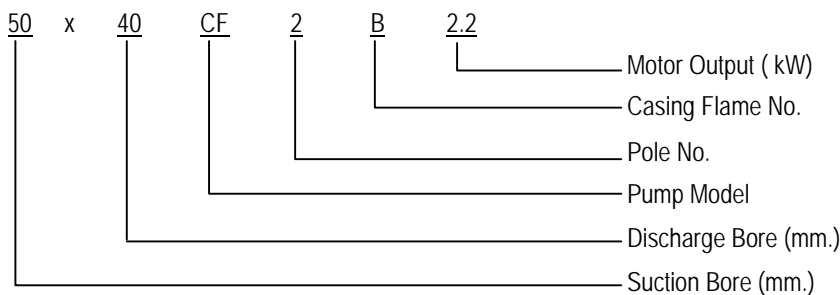
Applications

- Clean water supply in factories , condominiums , hotels , schools , hospitals , etc.
- Circulation of cold and/or hot water
- Water pressure boosting
- Fire services
- Sprinkled or flow irrigation.

Design Features

- **Back Pull - Out**
 - The suction/discharge piping and pump casing can remain in position while overhaul of the impeller, shaft , bearings and all other pump parts.
- **Compact**
 - The 2 - pole motor driven make the pump compact and minimize the installing space
- **Stability**
 - Upright discharge casing design ensure distortion from discharge pipe loads. Also no air stay in the upper part of casing.
- **Rising Characteristic**
 - MODEL CF2 runs Rising characteristic.
 - So , surging doesn't occur

Explanation of Model



Specifications

Liquid		Fresh Water (0~80°C)
Re. NPSH		See the Characteristic Chart
Max Suction Press		(7 - $\frac{\text{Pump Total Head:m}}{10}$)x 0.98 Mpa
Revolution		3000 min ⁻¹ (Synchronous)
Structure	Impeller	Closed
	Shaft Sealing	Gland packing
	Bearing	Sealed Ball Bearing
	Flange	JIS 10k
Material	Casing	Cast Iron (FC200)
	Impeller	Bronze (CAC406)
	Shaft	Stainless
Motor	Pole Nos	2
	Electric Supply	3 Phase 380V. 50Hz.
	Enclosure	IP 54

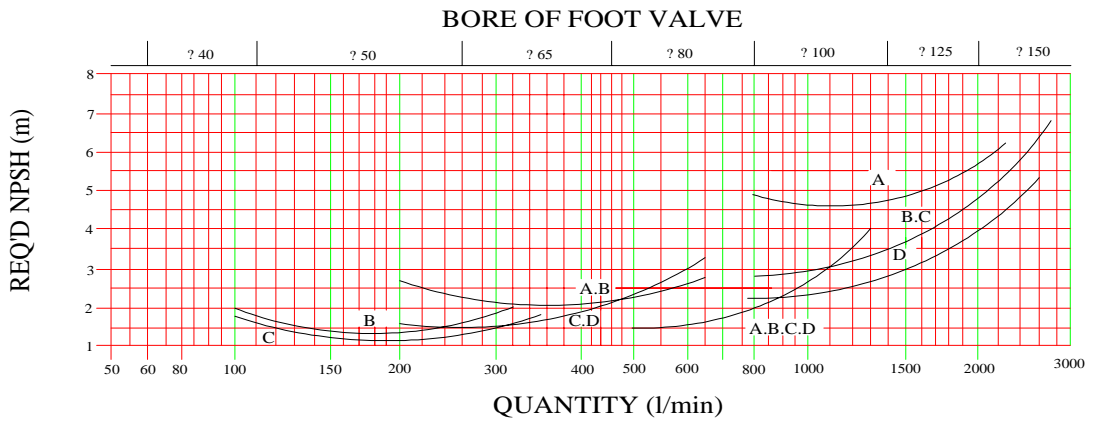
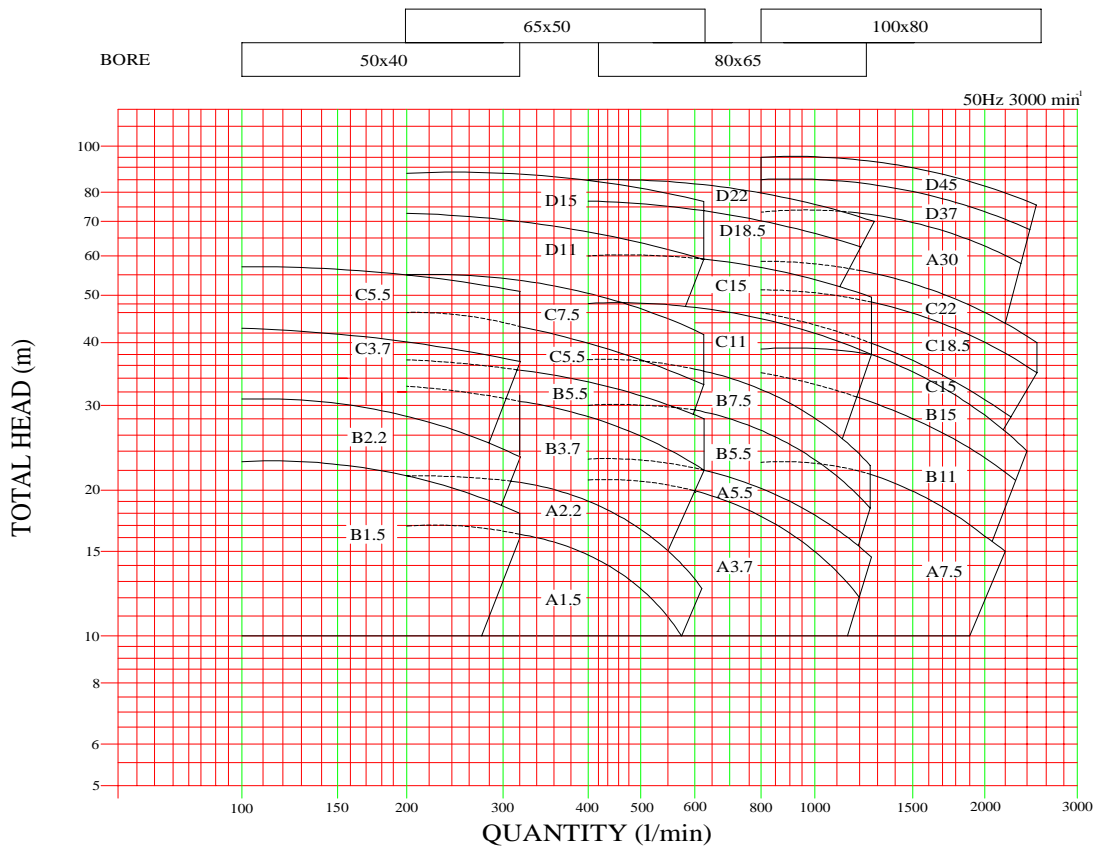
Standard Accessory

- Base Plate 1 Set
- Fitting Flanges JIS 10 K 1 Set
With Bolts,Nuts,Packings
- Coupling 1 Set
- Coupling Cover 1 Set

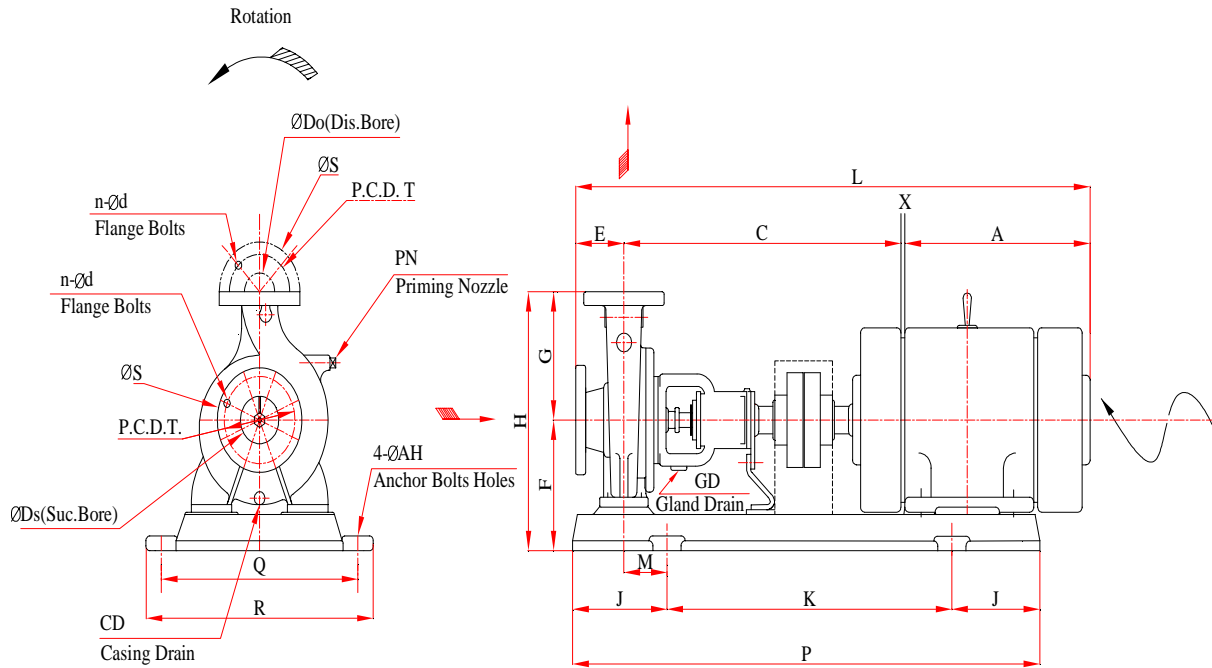
Options

- Pressure gauge With Valve
- Compound Gauge With Valve
- Air Vent
- Priming Funnel With Valve

ENDSUCTION CENTRIFUGAL PUMP MODEL CF2 CHARACTERISTIC CHART



Out Side View



OUTSIDE DIMENSION

MODEL : CF2

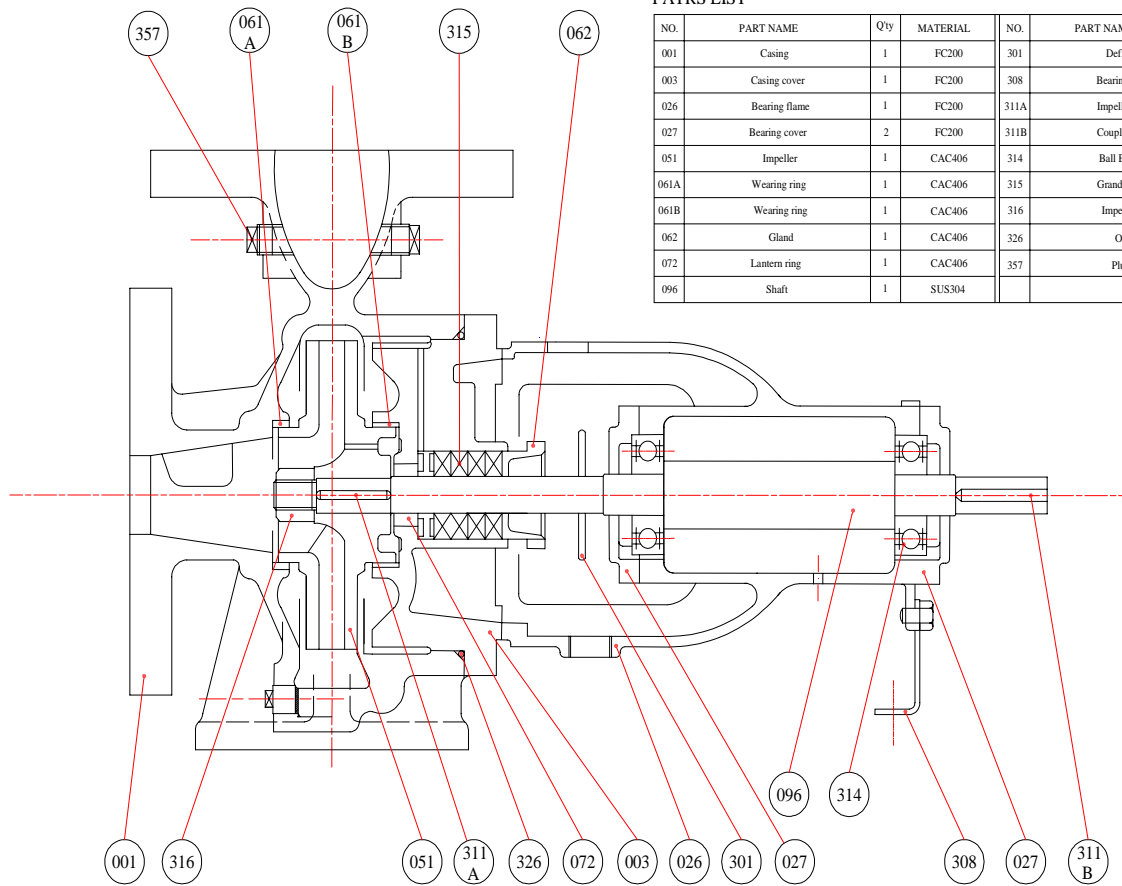
BORE DsxD0	MODEL	A	C	E	F	G	H	L	X	CD	GD	PN	COMMON BASE						WEIGH kg	
													M	J	K	P	Q	R		ØAH
50X40	B1.5	308	360	80	187	160	347	751	3	Rp1/4	Rp1/2	Rp3/8	55	120	480	720	290	330	Ø12	75.5
	B2.2	333	360	80	187	160	347	776	3	Rp1/4	Rp1/2	Rp3/8	55	120	480	720	290	330	Ø12	80.5
	B3.7	392	360	80	202	160	362	835	3	Rp1/4	Rp1/2	Rp3/8	70	135	540	810	320	360	Ø15	362
	C3.7	392	360	80	230	180	410	835	3	Rp1/4	Rp1/2	Rp3/8	70	135	540	810	320	360	Ø15	112
	C5.5	454	360	80	230	180	410	897	3	Rp1/4	Rp1/2	Rp3/8	70	135	540	810	320	360	Ø15	137
65X50	A1.5	308	360	80	167	140	307	751	3	Rp1/4	Rp1/2	Rp1/2	55	120	480	720	290	330	Ø12	66
	A2.2	333	360	80	167	140	307	776	3	Rp1/4	Rp1/2	Rp1/2	55	120	480	720	290	330	Ø12	81.5
	B3.7	392	360	80	202	160	362	835	3	Rp1/4	Rp1/2	Rp1/2	70	135	540	810	320	360	Ø15	107
	B5.5	454	360	80	202	160	362	897	3	Rp1/4	Rp1/2	Rp1/2	70	135	540	810	320	360	Ø15	127
	C5.5	454	360	100	230	180	410	917	3	Rp1/4	Rp1/2	Rp1/2	70	135	540	810	320	360	Ø15	137
	C7.5	454	360	100	230	180	410	917	3	Rp1/4	Rp1/2	Rp1/2	70	135	540	810	320	360	Ø15	148
	D11	608	360	100	265	225	490	1071	3	Rp1/4	Rp1/2	Rp1/2	75	160	600	920	400	450	Ø19	177
D15	608	360	100	265	225	490	1071	3	Rp1/4	Rp1/2	Rp1/2	75	160	600	920	400	450	Ø19	207	
80X65	A3.7	392	360	100	202	160	362	855	3	Rp3/8	Rp1/2	Rp1/2	70	135	540	810	320	360	Ø15	102
	A5.5	454	360	100	202	160	362	917	3	Rp3/8	Rp1/2	Rp1/2	70	135	540	810	320	360	Ø15	127
	B5.5	454	360	100	230	180	410	917	3	Rp3/8	Rp1/2	Rp1/2	70	135	540	810	320	360	Ø15	127
	B7.5	454	360	100	230	180	410	917	3	Rp3/8	Rp1/2	Rp1/2	70	135	540	810	320	360	Ø15	143
	C11	608	360	100	245	200	445	1071	3	Rp3/8	Rp1/2	Rp1/2	75	160	600	920	400	450	Ø19	177
	C15	608	360	100	245	200	445	1071	3	Rp3/8	Rp1/2	Rp1/2	75	160	600	920	400	450	Ø19	202
	D18.5	652	360	100	265	225	490	1117	5	Rp3/8	Rp1/2	Rp1/2	95	180	660	1020	400	450	Ø19	232
D22	672	360	100	285	225	510	1137	5	Rp3/8	Rp1/2	Rp1/2	95	180	660	1020	400	490	Ø19	275	
100X80	A7.5	454	360	100	230	180	410	917	3	Rp3/8	Rp1/2	Rp1/2	55	135	540	810	350	390	Ø15	143
	B11	608	360	100	245	200	445	1071	3	Rp3/8	Rp1/2	Rp1/2	75	160	600	920	400	450	Ø19	157
	B15	608	360	100	245	200	445	1071	3	Rp3/8	Rp1/2	Rp1/2	75	160	600	920	400	450	Ø19	202
	C15	608	360	100	265	225	490	1071	3	Rp3/8	Rp1/2	Rp1/2	75	160	600	920	400	450	Ø19	212
	C18.5	652	360	100	265	225	510	1117	5	Rp3/8	Rp1/2	Rp1/2	95	180	660	1020	400	450	Ø19	232
	C22	672	360	100	285	225	510	1137	5	Rp3/8	Rp1/2	Rp1/2	95	180	660	1020	440	490	Ø19	270
	D30	770	360	100	305	250	555	1235	5	Rp3/8	Rp1/2	Rp1/2	80	180	660	1020	490	490	Ø19	370
	D37	770	360	100	332	250	582	1235	5	Rp3/8	Rp1/2	Rp1/2	100	200	740	1140	550	610	Ø23	381
	D45	811	360	100	332	250	582	1276	5	Rp3/8	Rp1/2	Rp1/2	100	200	740	1140	550	610	Ø23	458

Note 1). Dimension A shows TECC

FLANGE DIMENSION

BORE Ds.Do	S	T	n	d
40	140	105	4	19
50	155	120	4	19
65	175	140	4	19
80	185	150	8	19
100	210	175	8	19

CONSTRUCTIONS



PATRS LIST

NO.	PART NAME	Q'ty	MATERIAL	NO.	PART NAME	Q'ty	MATERIAL
001	Casing	1	FC200	301	Deflector	1	CR
003	Casing cover	1	FC200	308	Bearing suport	1	SS400
026	Bearing flame	1	FC200	311A	Impeller key	1	SUS304
027	Bearing cover	2	FC200	311B	Coupling key	1	S45C
051	Impeller	1	CAC406	314	Ball Bearing	2	SUJ2
061A	Wearing ring	1	CAC406	315	Grand packing	1 set	Non-asbestos
061B	Wearing ring	1	CAC406	316	Impeller nut	1	SUS304
062	Gland	1	CAC406	326	Oring	1	NBR
072	Lantern ring	1	CAC406	357	Plug	1	FCMB
096	Shaft	1	SUS304				

Desing Detail

PUMP				
Model	Ball bearing	Gland packing	Shaft dimensions	Coupling key
	No.	Size X Length X Qty.	Daimeter	W X H X L
50X40CF2B	6305ZZ	□8 X 126 - 4	24	7X7X45
50X40CF2C	6306ZZ	□8 X 139 - 4	24	7X7X45
60X50CF2A	6305ZZ	□8 X 126 - 4	24	7X7X45
60X50CF2B	6305ZZ	□8 X 126 - 4	24	7X7X45
60X50CF2C	6306ZZ	□8 X 139 - 4	24	7X7X45
60X50CF2D	6306ZZ	□8 X 139 - 4	24	7X7X45
80X65CF2A	6306ZZ	□8 X 139 - 4	24	7X7X45
80X65CF2B	6306ZZ	□8 X 139 - 4	24	7X7X45
80X65CF2C	6306ZZ	□8 X 139 - 4	24	7X7X45
80X65CF2D	6307ZZ	□8 X 160 - 4	32	10X8X70
100X80CF2A	6306ZZ	□8 X 139 - 4	24	7X7X45
100X80CF2B	6306ZZ	□8 X 139 - 4	24	7X7X45
100X80CF2C	6307ZZ	□8 X 160 - 4	32	10X8X70
100X80CF2D	6307ZZ	□8 X 160 - 4	32	10X8X70

MOTOR						
Output	Volt	Current	Motor Speed	Insulation	Bearing	
kw	V	A	rpm	Class	Drive end	Non drive end
1.5	380	3.2	2820	F	6205ZZ	6205ZZ
2.2	380	4.6	2845	F	6205ZZ	6205ZZ
3.7	380	7.4	2865	F	6306ZZ	6306ZZ
5.5	380	11.1	2905	F	6308ZZ	6306ZZ
7.5	380	14.4	2900	F	6308ZZ	6306ZZ
11	380	21.5	2940	F	6309ZZ	6307ZZ
15	380	27.5	2925	F	6309ZZ	6307ZZ
18.5	380	33.7	2925	F	6309ZZ	6307ZZ
22	380	41.1	2940	F	6211C3	6211C3
30	380	58.0	2960	F	6312C3	6312C3
37	380	69.6	2955	F	6312C3	6312C3
45	380	80.7	2945	F	6312C3	6212C3

END - SUCTION CENTRIFUGAL PUMP CLOSE COUPLED TYPE

MODEL : CFM2

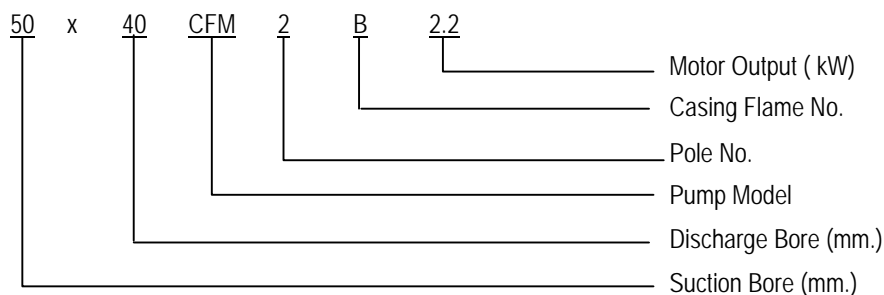
Applications

- Clean water supply in factories , condominiums , hotels , schools , hospitals, etc.
- Circulation of cold and/or hot water
- Pressure boosting
- Sprinkled or flow irrigation

Features

- **Back - Pullout**
 - Maintenance is very easy because of the back-pullout construction,
 - The reason is that it is possible to repair pump even if piping is not remove.
- **Compact**
 - the 2-pole motor driven make the pump very small and minimize the setting space.
- **Maximum Resistance to Mis - Alignment**
 - There is no coupling because of impeller being installed in the shaft of motor , and need not adjust between pump and motor.
- **Stability**
 - Discharge is upright.
 - It is very strong against the weight of discharge pipes.
- **Rising Characteristic**
 - MODEL CFM2 runs Rising characteristic.
 - So, surging doesn't occur.

Explanation of Model



Specifications

Liquid	Fresh Water (0-80°C)	
Re. NPSH	See the Characteristic Chart	
Max Suction Press	$(7 - \frac{\text{Pump Total Head:m}}{10}) \times 0.98 \text{ Mpa}$	
Revolution	3000 min ⁻¹ (Synchronous)	
Structure	Impeller	Closed
	Shaft Sealing	Mechanical Seal
	Bearing	Sealed Ball Bearing (Motor Bearing)
	Flange	JIS 10k
Material	Casing	Cast Iron (FC200)
	Impeller	Bronze (CAC406)
	Shaft	Stainless
Motor	Pole Nos	2
	Electric Supply	3 Phase 380V. 50Hz.
	Enclosure	IP 54

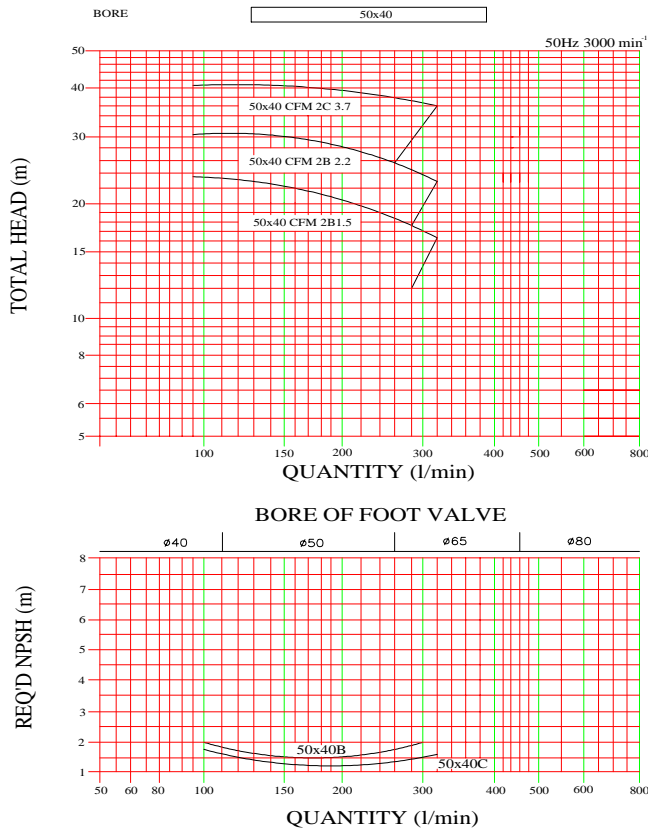
Standard Accessory

- Base Plate 1 set
- Fitting Flang 1 set
With Bolts,Nuts,Packings

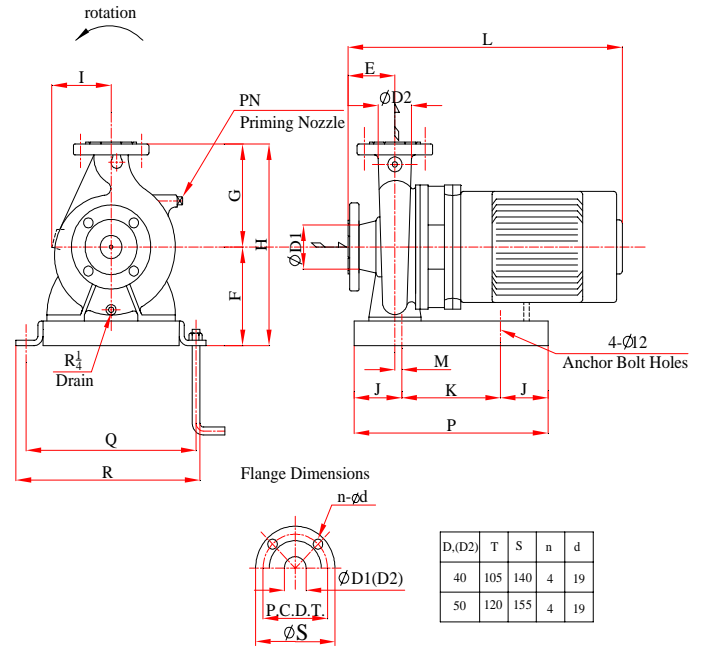
Options

- Pressure Gauge With Valve
- Compound Gauge With Valve
- Air Vent

**ENDSUCTION CENTRIFUGAL PUMP
MODEL CFM2 CHARACTERISTIC CHART**



Out Side View

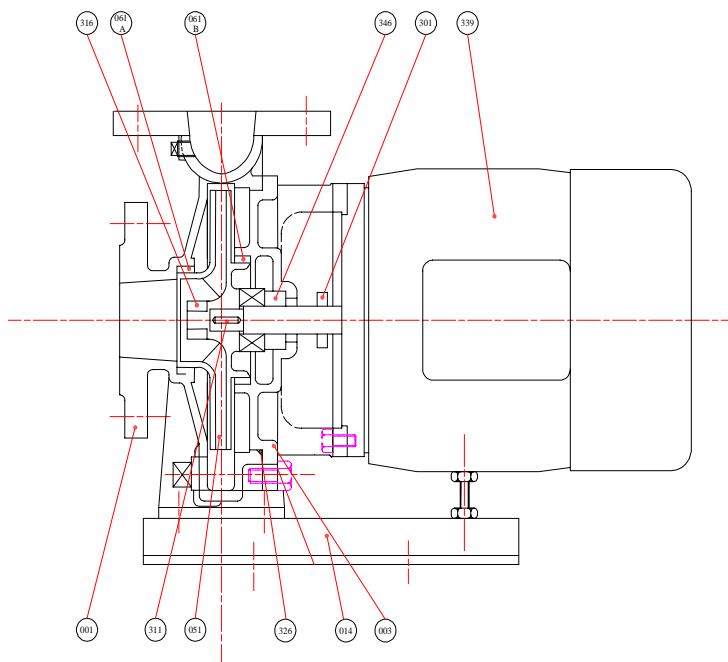


Out Side Dimensions

UNIT : mm.

Bore $\phi D_1 \times D_2 \phi$	Model	Out Put kw.	E	F	G	H	I	L	M	J	K	P	Q	R
50x40	CFM2B 1.5	1.5	80	172	160	332	170	466.5	20	70	230	370	250	280
	CFM2B 2.2	2.2	80	172	160	332	170	491.5	20	70	230	370	250	280
	CFM2C 3.7	3.7	80	200	180	380	189	544	20	80	240	400	300	330

CONSTRUCTIONS



PATRS LIST

NO.	PART NAME	Qty	MATERIAL
001	Casing	1	FC200
003	Casing cover	1	FC200
014	Base plate	1	SS400
051	Impeller	1	CAC406
061A	Wearing ring	1	CAC406
061B	Wearing ring	1	CAC406
301	Deflector	1	CR
311	Impeller key	1	SUS304
316	Impeller nut	1	SUS304
339	Motor	1	
346	Mechanical Seal	1 set	Carbon/ceramics

Design Detail (50Hz.)

Bore mm.		Model	Output kw.	Volt V.	Current (A)	Motor Speed rpm.	Insulation Class	Bearing	
suction	Discharge							Drive End	Non. Drive End
50	40	50X40 CFM2 B1.5	1.5	380	3.18	2820	F	6205ZZ	6205ZZ
50	40	50X40 CFM2 B2.2	2.2	380	4.6	2845	F	6205ZZ	6205ZZ
50	40	50X40 CFM2 C3.7	3.7	380	7.36	2865	F	6306ZZ	6306ZZ